

Joint Strategic Needs Assessment

Bristol JSNA 2011 - Development,
Influence and initial Summary

23rd Jan 2012

Pat Diskett (Dep. Director of Public Health, NHS Bristol)

Claudia McConnell (Service Director, Strategic
Commissioning (Children), BCC/NHS Bristol)

Nick Smith (Bristol JSNA Project Manager)

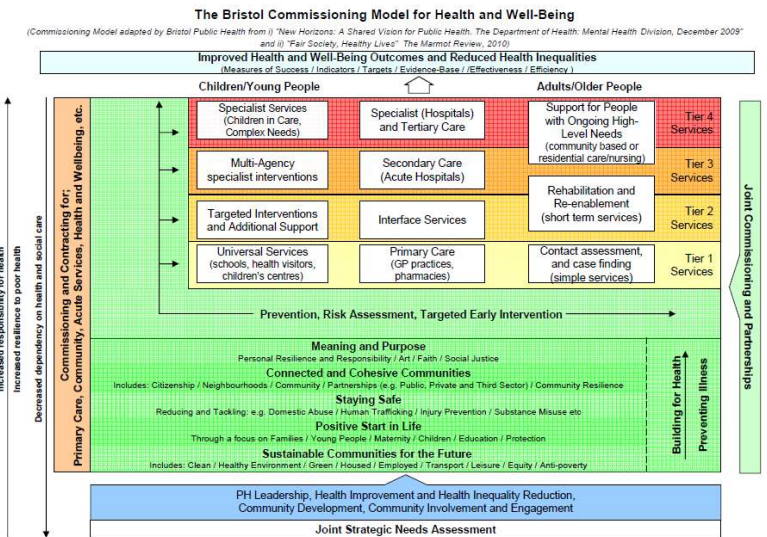


JSNA - Background

- Joint process – Council / NHS / partners
- Identify Bristol's **health and wellbeing needs** to improve **health outcomes** - now & in the future

- **2008 – 2010: 3-year cycle**
- **Strategic focus to support Commissioning & shape services**

- All JSNA Reports are at:
www.bristol.gov.uk/JSNA
 [or email: jsna@bristol.gov.uk]



©2010 NHS Bristol. All rights reserved. Not to be reproduced in whole or in part without the permission of the copyright holder (contact: PHbusiness@bristol.nhs.uk).



JSNA 2011 - Development

- New stakeholders, **new Baseline**
national 2011 guidance ; local development
- **Iterative process:**
 - New draft data-sets / validation process
 - Engagement & Feedback
 - Develop intelligence & Strategic Summary
- **Joint intelligence**

Local
Government
Group

Joint Strategic Needs
Assessment:
Data Inventory



Aim is for all parties to understand and identify local needs jointly – Important role for VCS & LINK to contribute



JSNA – Strengthened Influence

“The JSNA and joint health and wellbeing strategy are the key to putting localism into action”

[Paul Burstow, Minister for care Services; JSNA and JHWS explained – commissioning for populations; Dec 2011]

❑ Emerging Health and Local Authority structures

- Health and Wellbeing Board (statutory role)
- Clinical Commissioning Groups (GP commissioning)
- Public Health transition

❑ **JSNA** – Central to work of Health and Wellbeing Board - influence on commissioning plans for all



Influence on Commissioning

“In future, a JSNA will be an essential part of the commissioning cycle, guiding decisions made at all stages from strategic planning and service provision through to monitoring and evaluation.”

NHS Confederation / Local Gov Improvement & Development; 2011

- JSNA - **evidence base** for new statutory **Joint Health and Wellbeing Strategy (JHWS)**
- All commissioning intentions for Local Authority should be driven by priorities identified in the JSNA and JHWS
- Commissioning plans of Clinical Commissioning Groups to have regard for JSNA (and be in line with JHWS)



Children's Commissioning & JSNA

❑ Evolving Children and Young People's landscape

- Children & Young People's Plan
- Child Poverty Strategy
- School and GP commissioning
- Children, Adults and Families (CAF)
- Commissioning in areas and localities



Bristol JSNA 2011 – Outline

- ❑ Full refresh of JSNA Baseline – new Data-sets and Strategic Summary in process

- ❑ Draft data appendices
 - Introductory session to follow Q&A

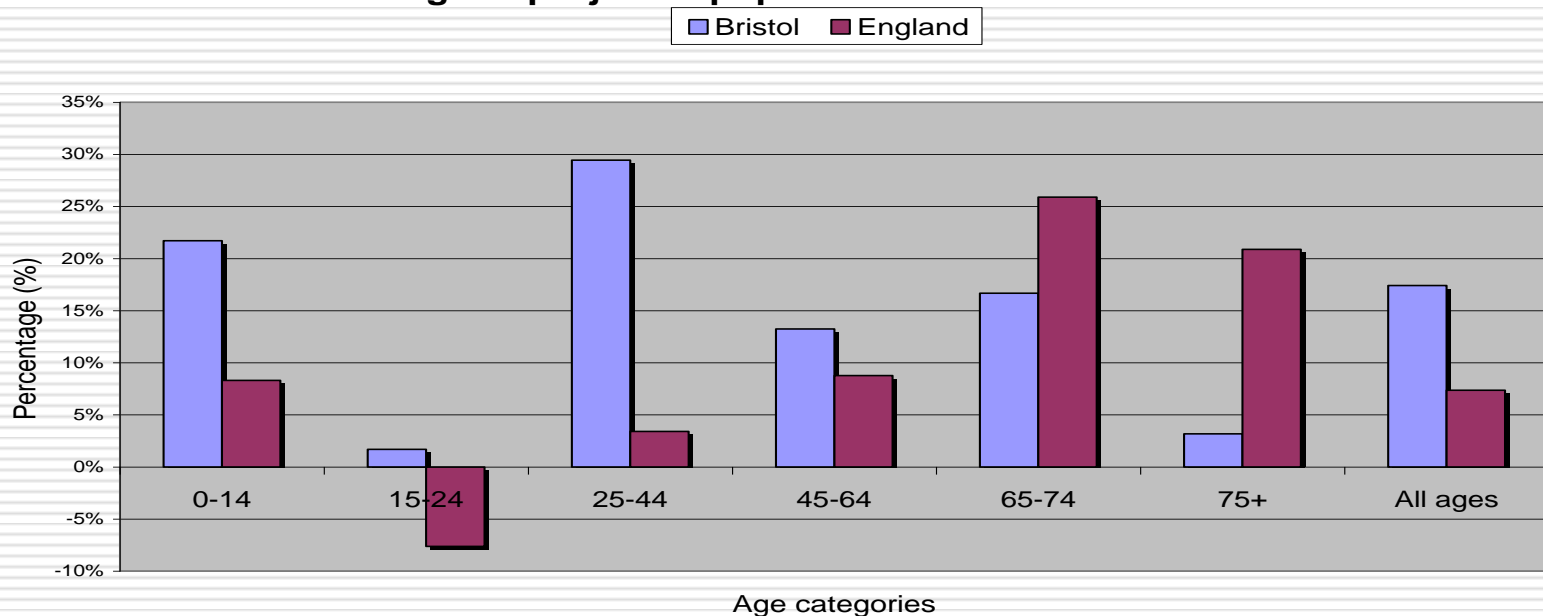
- ❑ Emerging Key Summary points
 - See handout - to be refined through engagement process
 - Examples of initial headline points on next slides...



JSNA 2011: App'x 1– Population

- Bristol has a relatively young population; projection contrasts significantly with national aging population profile:

Bristol vs England:
% change of projected population between 2008-2018



JSNA 2011: App'x 2– Healthy Communities

☐ “Tale of 3 cities” [IMD 2010 – most deprived 10%]

➤ Inner City Deprivation

- *high pop'n growth / diverse / worklessness*

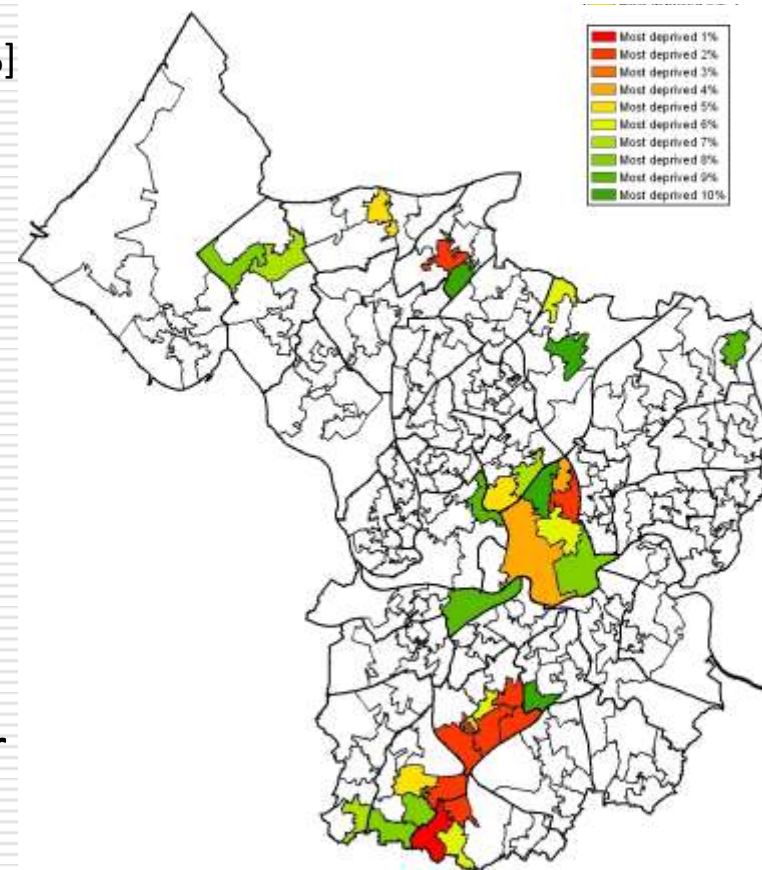
➤ Outer area Deprivation, esp South

- *low pop'n growth / white / worklessness*

➤ Affluence in lower North-West

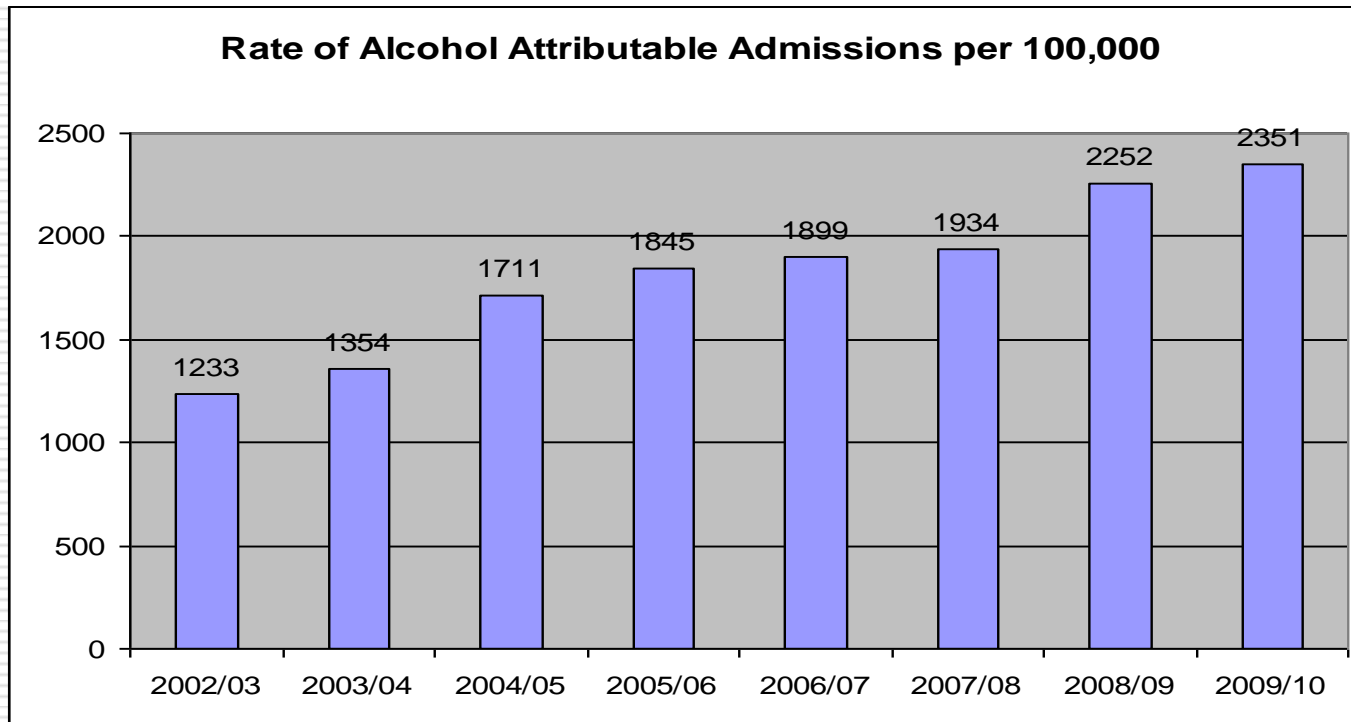
- *low pop'n growth / white / higher income*

☐ “Big Society” challenge - most volunteer participation is in most affluent areas



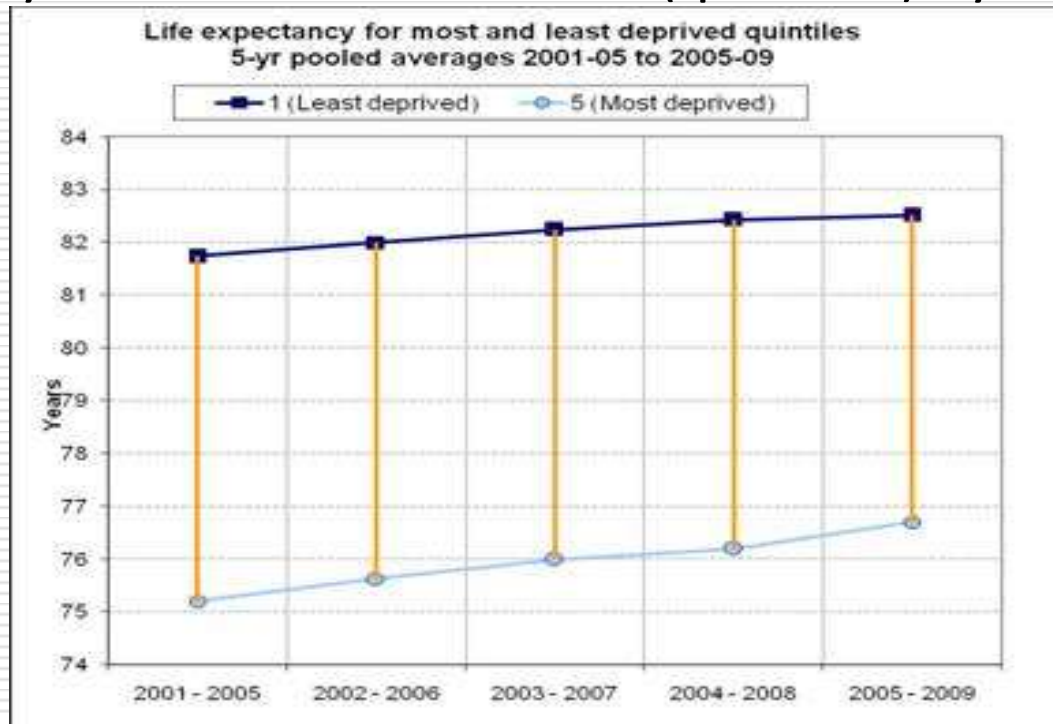
JSNA 2011: App'x 3– Lifestyles & Health Improvement

- Rising trend in Bristol alcohol-attributable hospital admissions - indication of alcohol misuse in local pop'n:



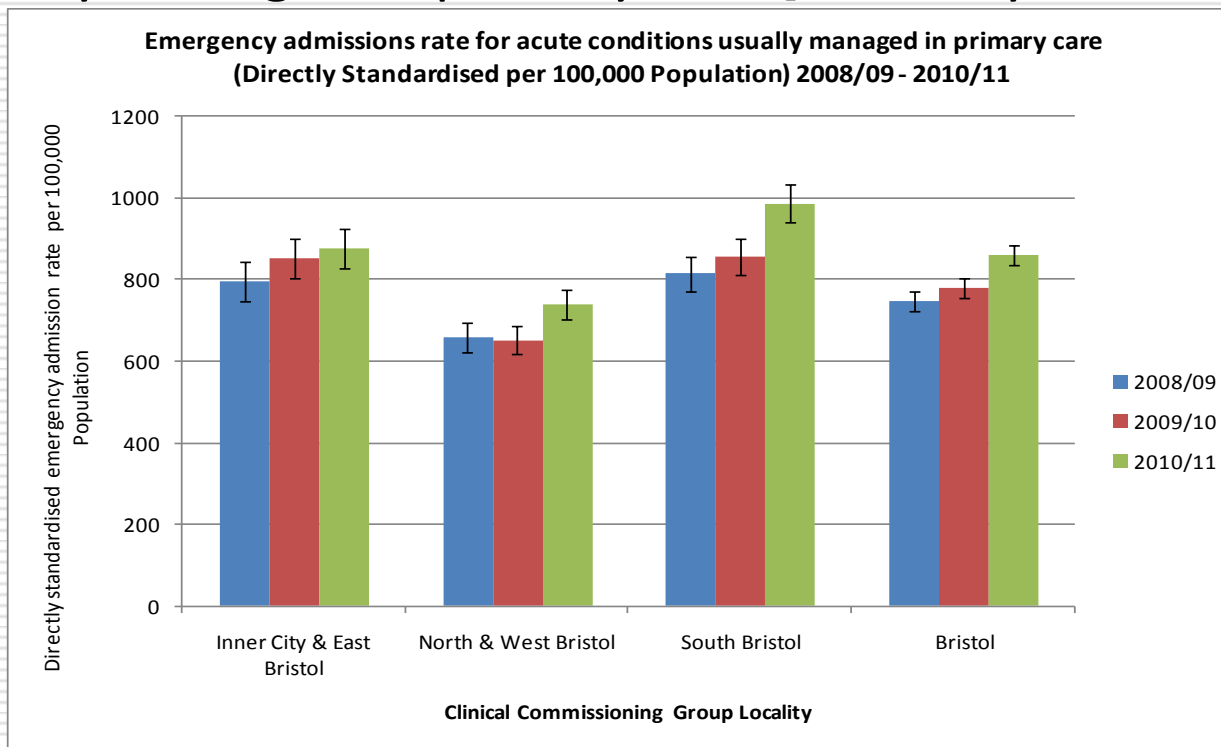
JSNA 2011: App'x 4 – Health, Wellbeing and Inequalities

- Life expectancy – 9.4 years ward gap / Persistent inequality between Bristol wards (quintiles) by deprivation



JSNA 2011: App'x 5– Service Utilisation

- Rising emergency hospital admissions for conditions usually managed in primary care [+ locality differences]



JSNA 2011 – Next steps

☐ Engagement process to 5th March – today is only start!

- 6 draft Data Appendices on web-site
- Feedback survey / opportunity to contribute – all parties
- Interim updates due after 10th Feb
- Developing high-level strategic overview

☐ VCS / LINK opportunities

- shape local agenda - wealth of data about service user needs, local services and unmet need / identify gaps in services

☐ Direct web-link for draft 2011 JSNA and feedback survey:

www.bristol.gov.uk/page/jsna-draft-data-sets-2011



Discussion Groups

"Information from the voluntary sector, qualitative sources, service providers, the private sector ... will be crucial to the ability of a JSNA to provide an objective assessment of needs and priorities."

[JSNA: A springboard for action, LGID / Dept of Health, 2011]

- What key areas could the JSNA include to be more useful to you, as providers, commissioners or service users, on suggested areas? What could you provide?
- Specific gaps where data on certain groups (and their health needs) could be improved - how could you contribute to this?
- What priorities / analysis do you think need further development in the proposed 2011 JSNA?



