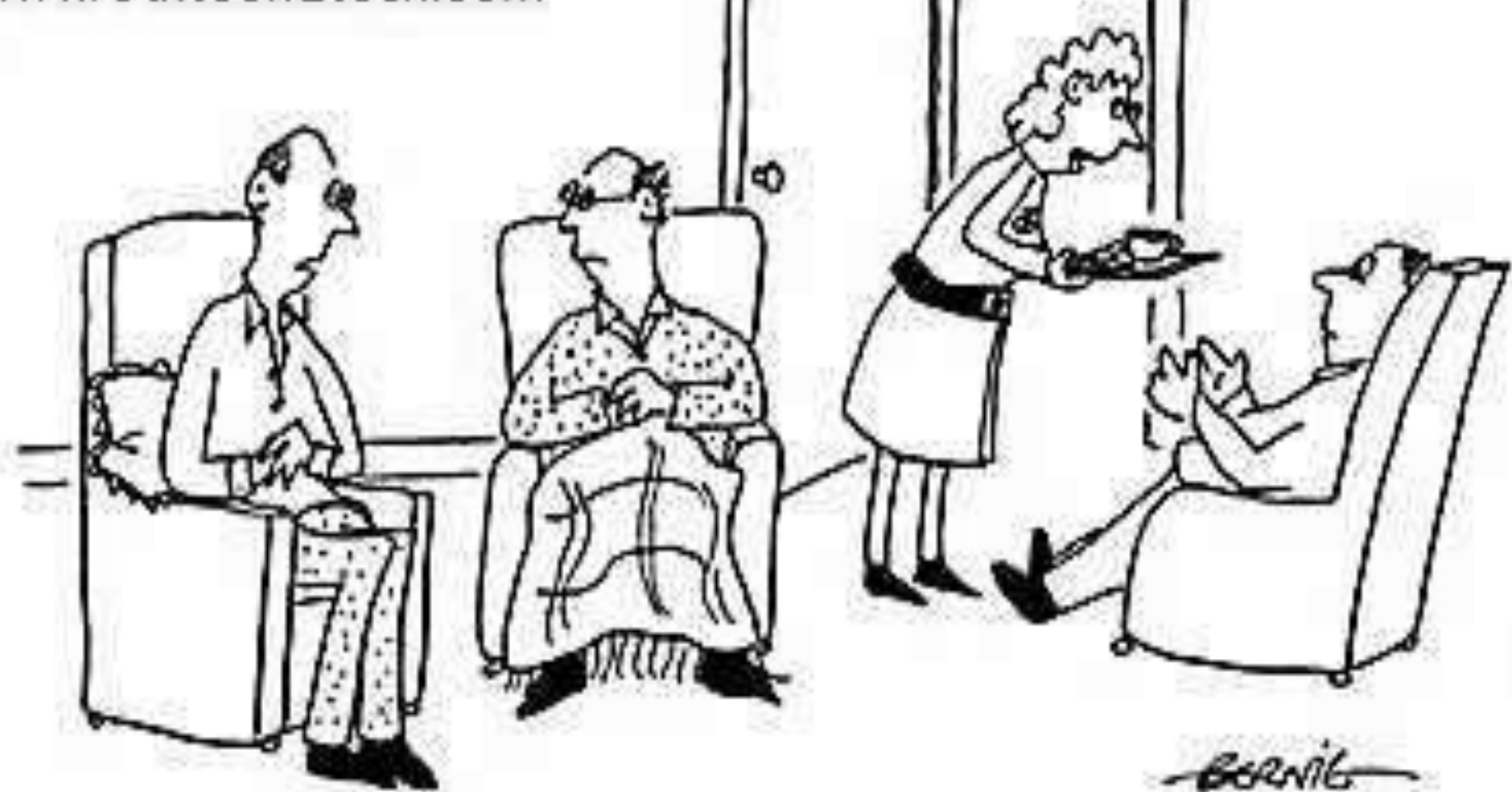


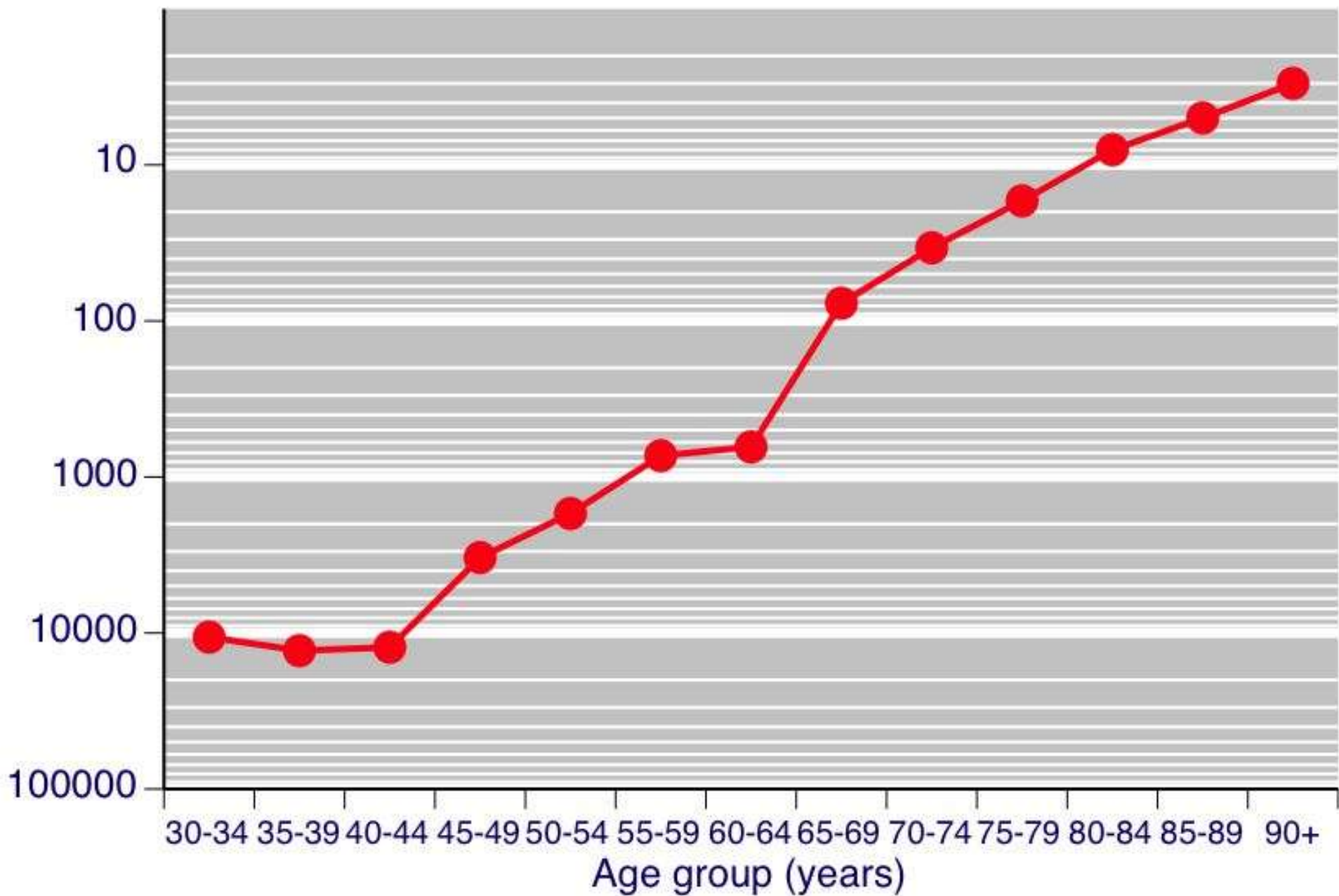
# Dementia Care





"I wish I knew now what I knew then....."

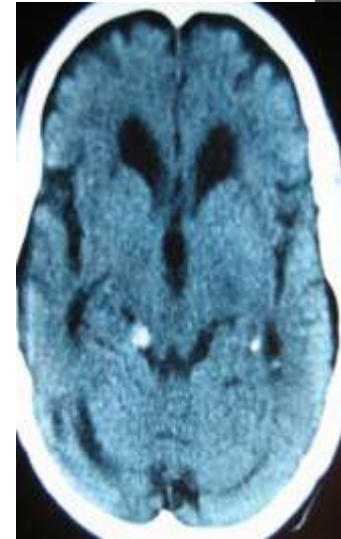
# Risk of developing dementia (1 in )



# Common clinical situation

## Mrs Jones:

- 83 year old lady found lying on the floor by her carer.
- On admission, she seems to be talking to herself, but it is hard to understand what she is saying.
- She has an anxious demeanour and repeatedly pulls at her nightclothes.
- She argues with the staff, angrily refuses to have a blood sample taken, and won't eat her breakfast.



# Dementia st

Living well with dementia:  
A National Dementia Strategy

- increase awareness of dementia
- ensure early diagnosis and intervention
- radically improve the quality of care that people with the condition receive
- carer support

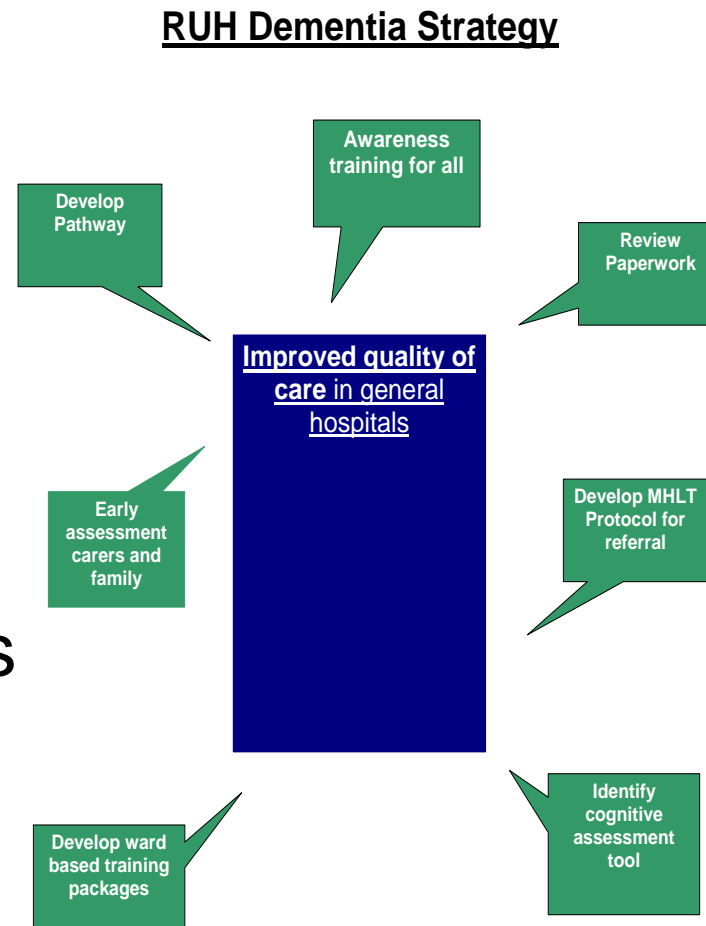


Putting **People** First

# Progress..

1. training programme rolled out
2. specific care pathway in place
3. cognitive assessment tools
4. intranet website for dementia
5. working with partners
6. collaboration with patient groups

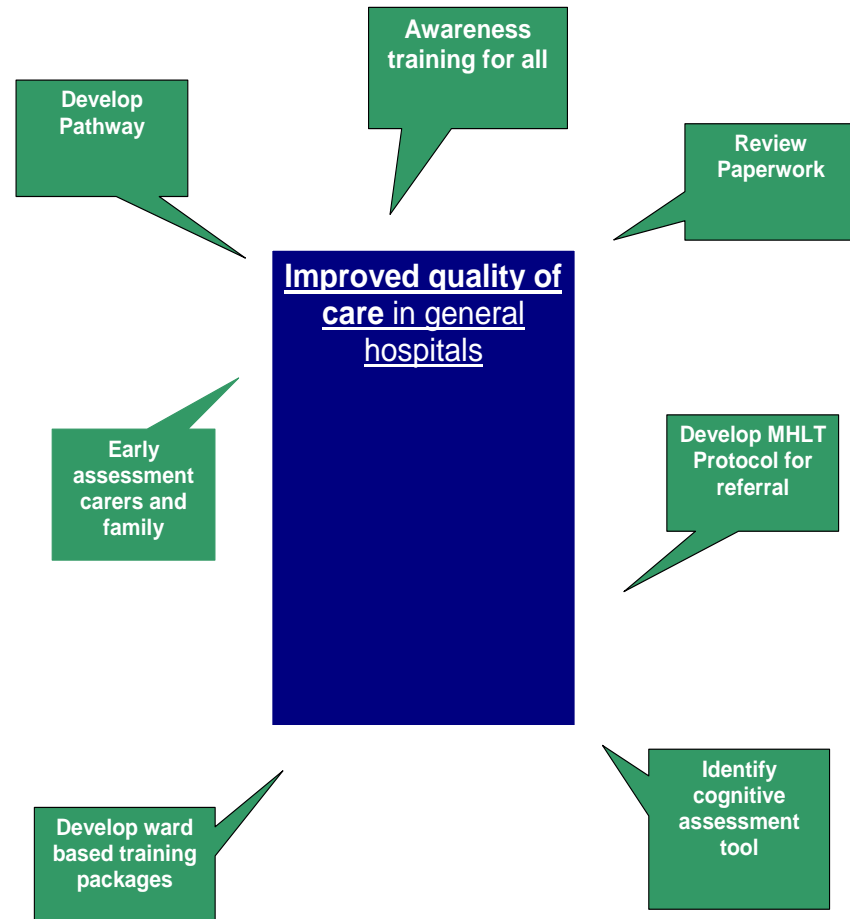
Recognition in recent report



# Example

## RUH Dementia Strategy

1. Ward environment
2. Ward charter marks
3. “DATE” service



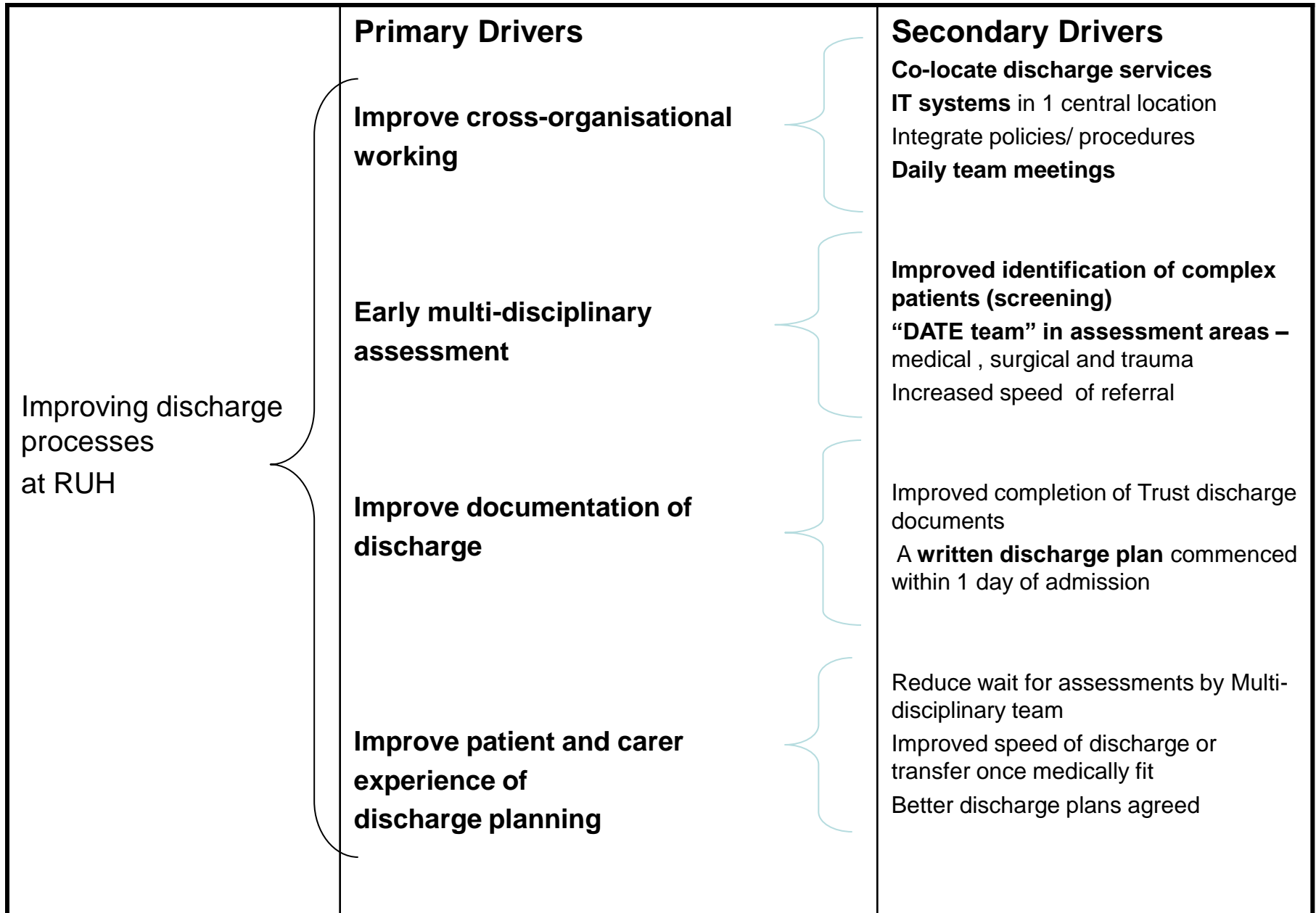


	<b>Standard</b>	<b>Method of Measure</b>
<b>1.</b>	All staff talk to patients and visitors in a <b>professional, caring and courteous manner</b>	Observations of care Feedback to the ward in terms of compliments and complaints
<b>2.</b>	Patient care is <b>person-centred</b> as evidenced by observation of staff interaction with patients	Direct ward observation
<b>3.</b>	Appropriate risk assessment will be done on all patients who are <b>at risk of wandering</b>	Medical records check
<b>4.</b>	All patients newly prescribed <b>anti-psychotic medication</b> will be referred to Mental Health Liaison Service.	Check drug charts with ward pharmacist
<b>5.</b>	There <b>should be flexibility in provision/ presentation of food</b> – e.g. Snacks/ finger foods offered; recognising some patients may take a long time to eat a meal	Inspection
<b>6.</b>	<b>Coloured trays and crockery</b> are used to support patients with dementia at mealtimes	Inspection

# THE DATE SERVICE

- “A service that coordinates complex discharges under joint control of all agencies, eliminating existing organisational boundaries, and improving patient care”

# DATE SERVICE Driver Diagram



# Conclusions

- A priority condition
- Good Dementia Care = Good Care
- Environmental changes
- Better family liaison and discharge planning

