

B&NES Health and Wellbeing Network Meeting
February 9th 2011

Transformation and Reform Local Update

Janet Rowse

Chief Executive, Director of Adult Social Care & Housing (Acting)

Principles Underpinning Reform

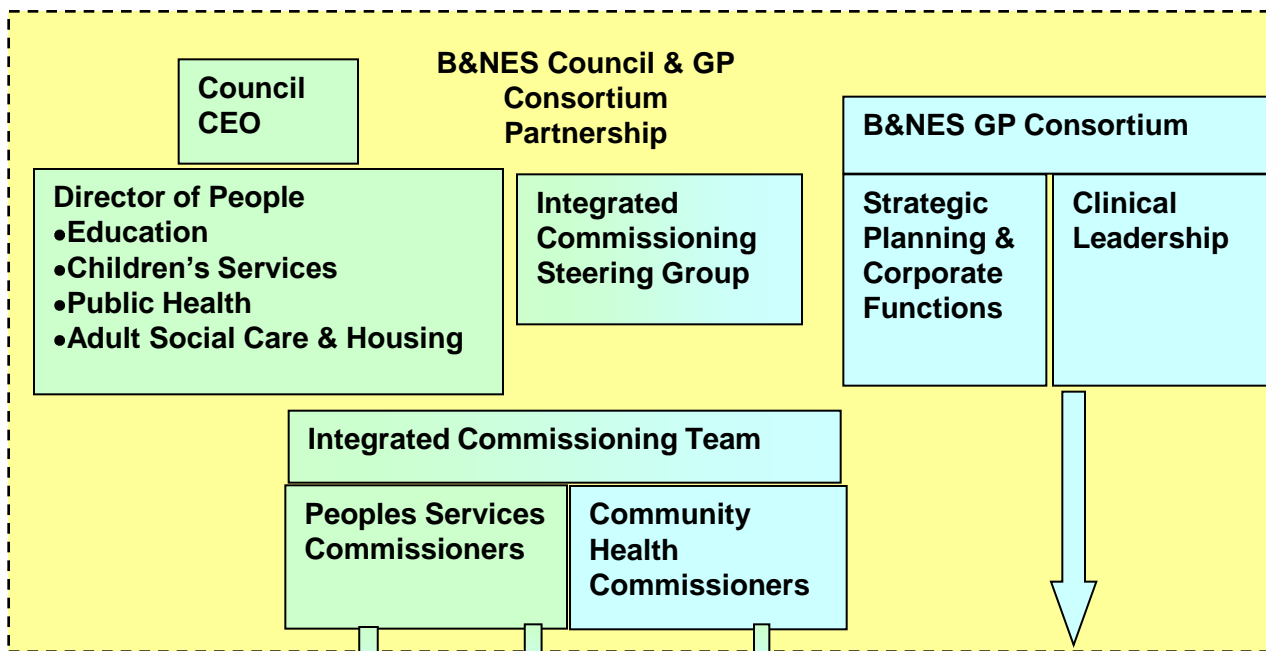
- Patients/Users at the heart of decisions about their care
- Clinicians driving decisions about services
- Focus on improving outcomes

Four Areas of Transformation

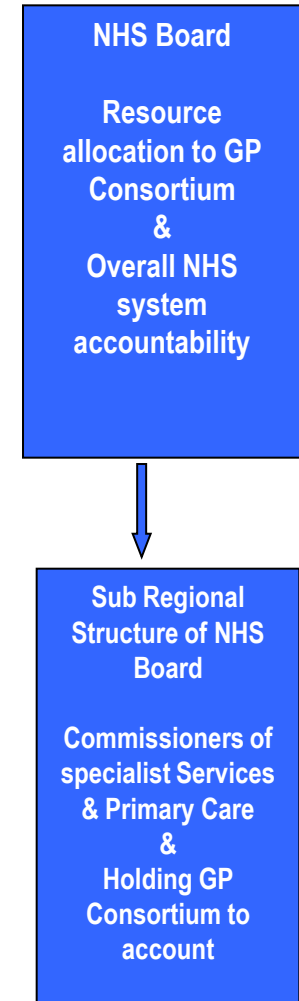
Commissioning	NHS Board GP Consortia (Local Pathfinder) PCT Clusters (temporary structure)
Service Provision	Choice and Competition Foundation Trusts Social Enterprise
Public Health	Public Health England Public Health moves to Local Authority B&NES Director of Public Health
Local Authority Changes	Health & Wellbeing Boards (Local Pathfinder) Healthwatch Scrutiny

Working together for health & wellbeing

B&NES Health & Well Being Board



Blue / Green =
Commissioners
Pink = Service Providers



‘Right care Best Value’

Listening to local people

Derek Thorne

Assistant Director Communications and Corporate Affairs

Engagement and Consultation

- Talking and listening to people July- December
- Public meetings, press and publications
- Consultation document
- Health and Wellbeing Network
- Summary report and key findings

Seven key findings

- Quality and user experience of most concern to people
- Support for services in the community but confidence sought on deliverability
- Support for Hospitals becoming smaller and more targeted but reassurance sought on systems being easy to use & joined up

Key findings

- Reducing waste and duplication strongly supported
- Request for services that are flexible individual and personalised
- Request to be well informed when changes are made- good communication
- Request for continued support and recognition for carers