



# Configuration of GP Commissioning Consortia

---

**Jill Shepherd – Director of Strategic Projects – NHS  
Bristol**

**Will Warin – PEC chair and Executive Group member  
for the N&W Locality**

**Joint meeting between Bristol's voluntary sector  
networks and the Bristol LINK primary care and  
community services group**

**Tuesday 2 November 2010**



# Current situation

---

- Consultation process 3 September 2010 to 4<sup>th</sup> November 2010
- Meetings with
  - BCC Senior Leadership Team
  - Individual councillors
  - Overview and Scrutiny Committee
  - Bristol LINK and voluntary sector network
  - GP practices
  - Local Medical Committee  
etc

# Options

---

- **Option 1** - Three organisations for the city of Bristol, covering the same geographical areas as the current localities
- **Option 2** - One organisation covering the city of Bristol, with three localities to ensure local clinical engagement
- **Option 3** - One organisation covering the Bristol, North Somerset and South Gloucestershire areas, with localities to ensure clinical engagement.
- **Option 4** - One organisation covering Bristol and other areas that refer mainly to the Bristol acute trusts (ie South Gloucestershire and the Woodspring locality of NHS North Somerset) with localities.
- **Option 5** - One organisation covering the "Avon" area, to include Bristol, South Gloucestershire, North Somerset, and Bath and North East Somerset, with localities.



# Complexity

---

- Not a “regular” consultation
- NHS Bristol managing this stakeholder consultation as current responsible statutory body.
- GPs to make the decision?
- Stakeholder feedback to be discussed at the November PEC with clinical and BCC reps

# Complexity

---

- Recommendation of the PEC will be taken to NHS Bristol Board – for information?
- Dependant on recommendation may need further discussion with other GP consortia, PCTs and Local Authorities

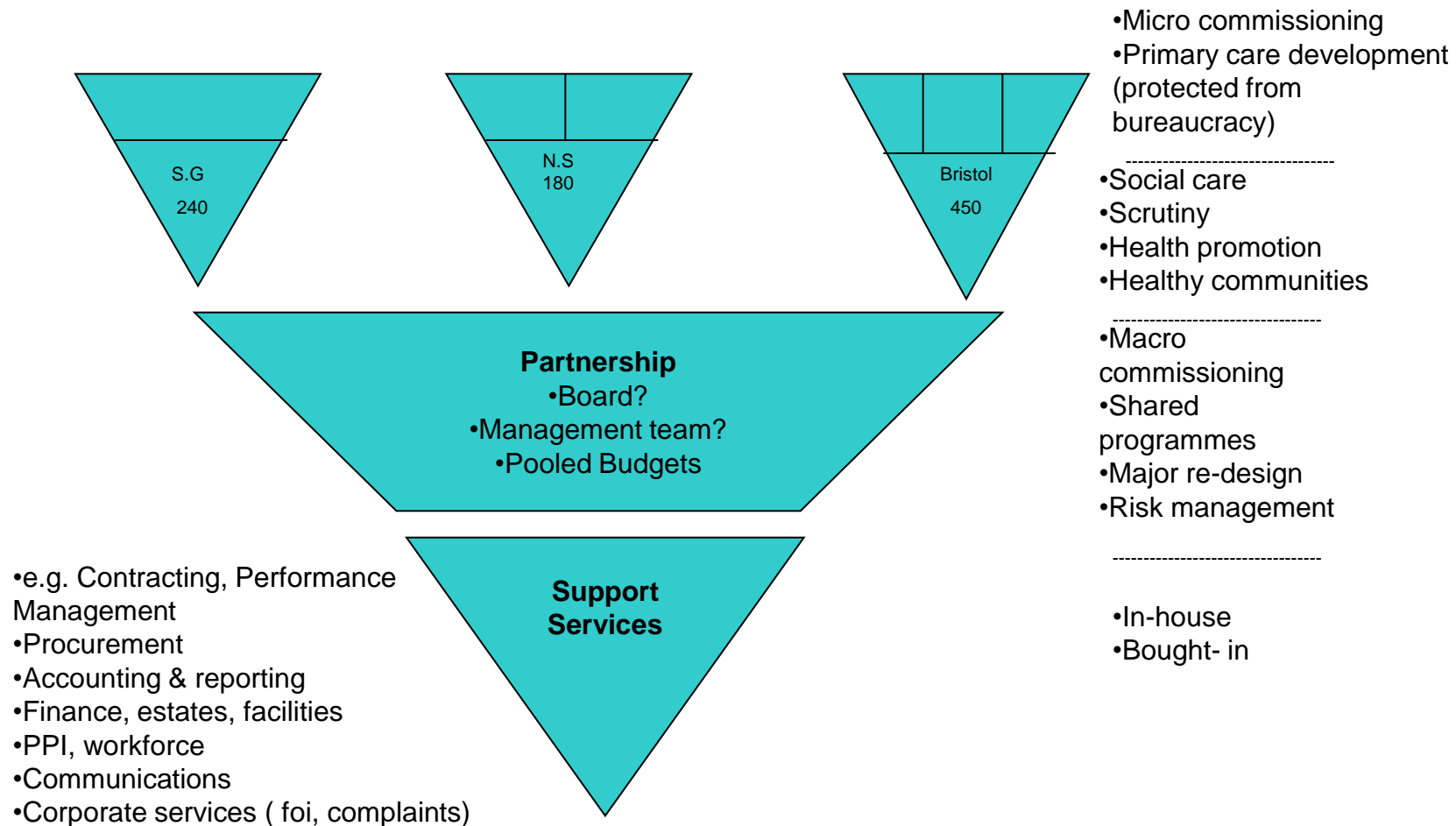


# Form & Function

---

- BNSSG not CUBA
- Big & Small
- No single right way
- Localities
- 2 broad options

# Working Model



# Discussion

---

