

# The Care Forum

9<sup>th</sup> Nov 2011  
The Vassall Centre

# Presentation outline:

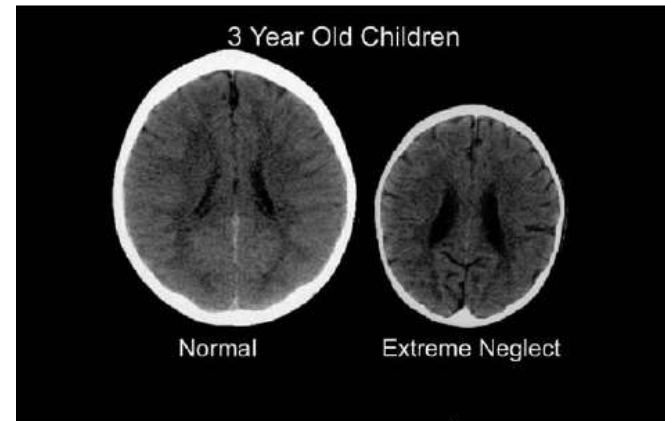
- The changing context
- The South Glos Dept CYP response including new Locality arrangements
- The ongoing South Glos CYP Transformation Programme
- Possible implications for the Voluntary and Community Sectors

# The changing context

- Reduction in prescription, abandonment of national targets
- The “Big Society” / Localism
- Similar themes but less money

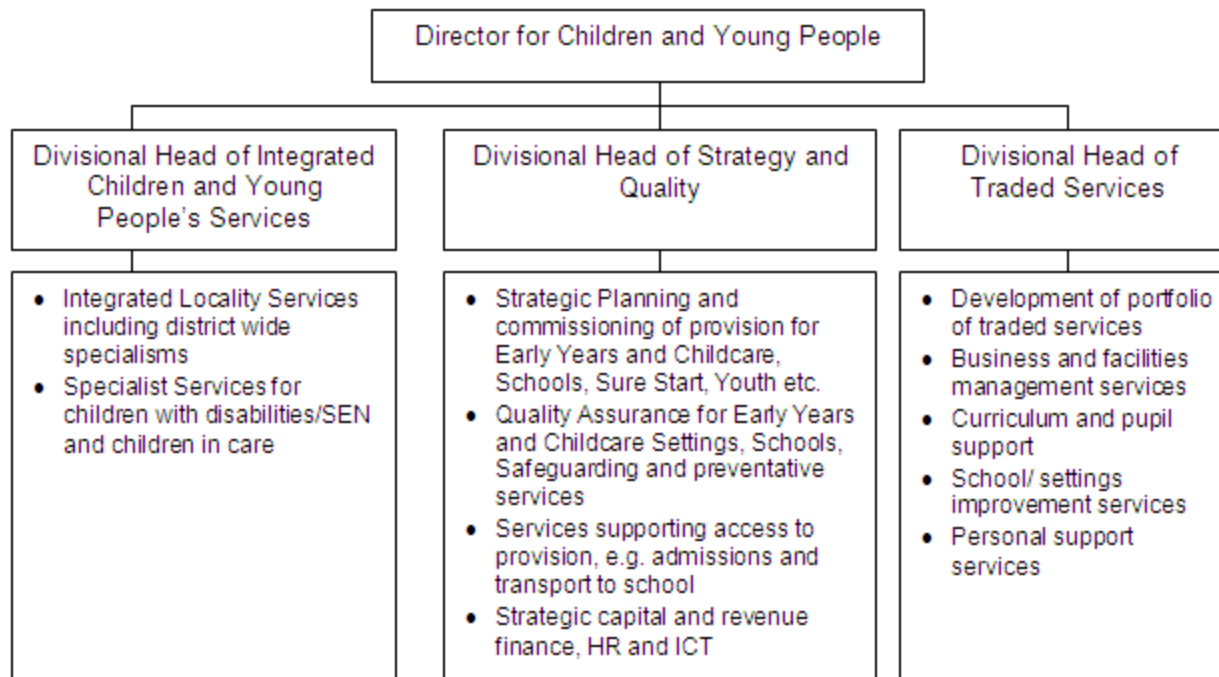
## Early Intervention: The Next Steps

An Independent Report to Her Majesty's Government  
Graham Allen MP

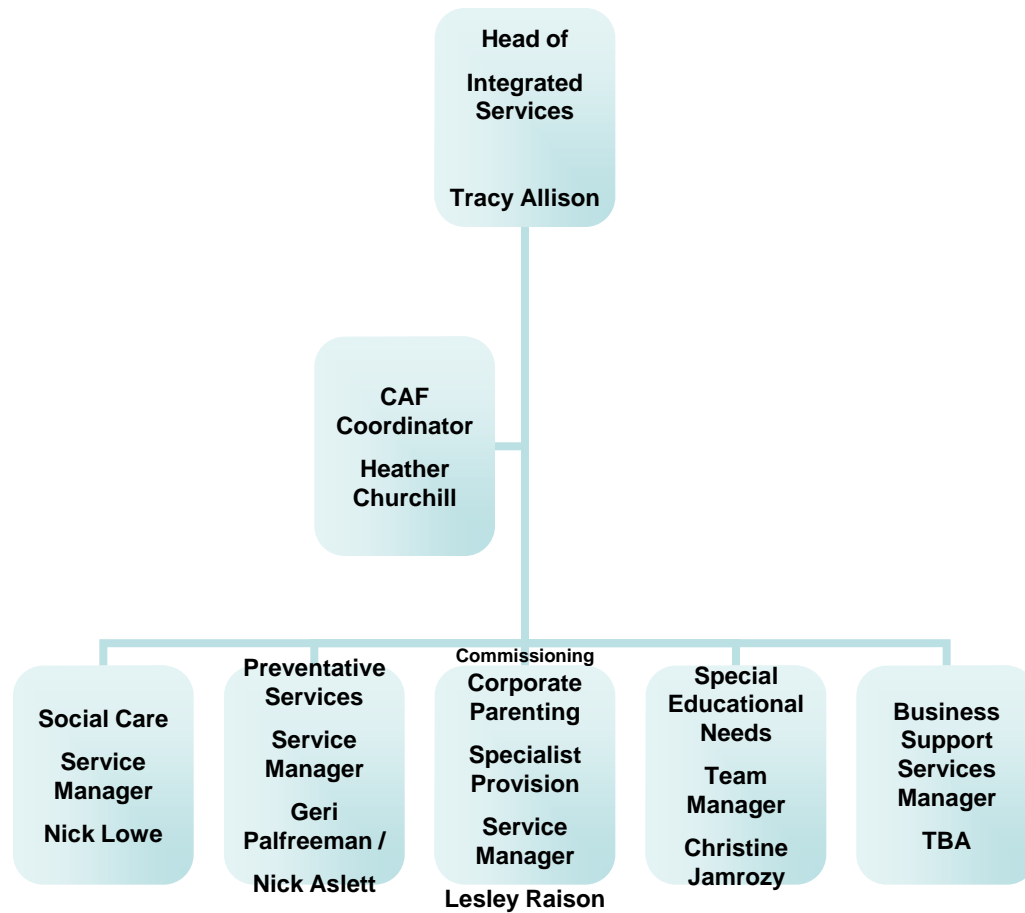


# The South Gloucestershire Council

## Department for Children and Young People

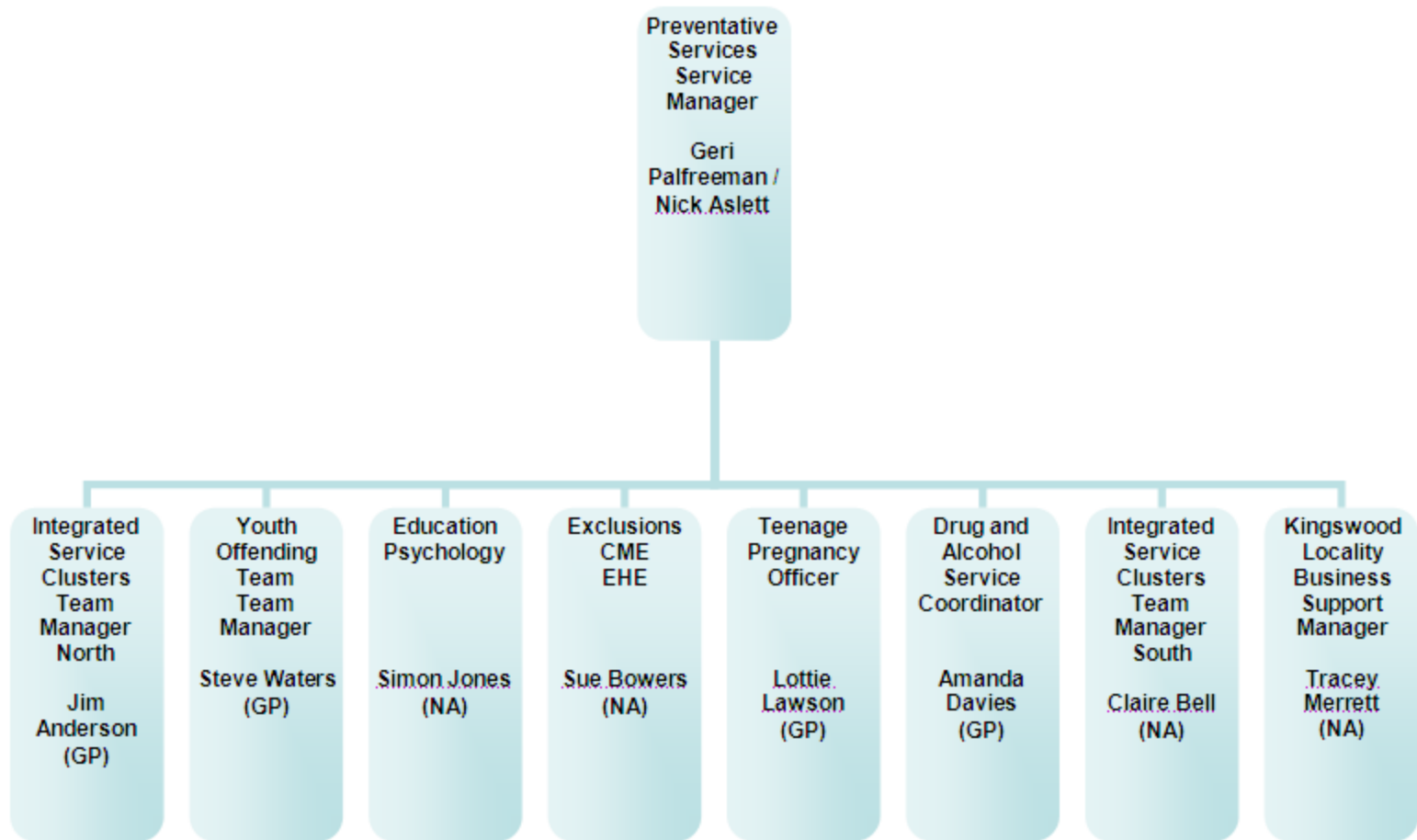


# The Integrated Services Division

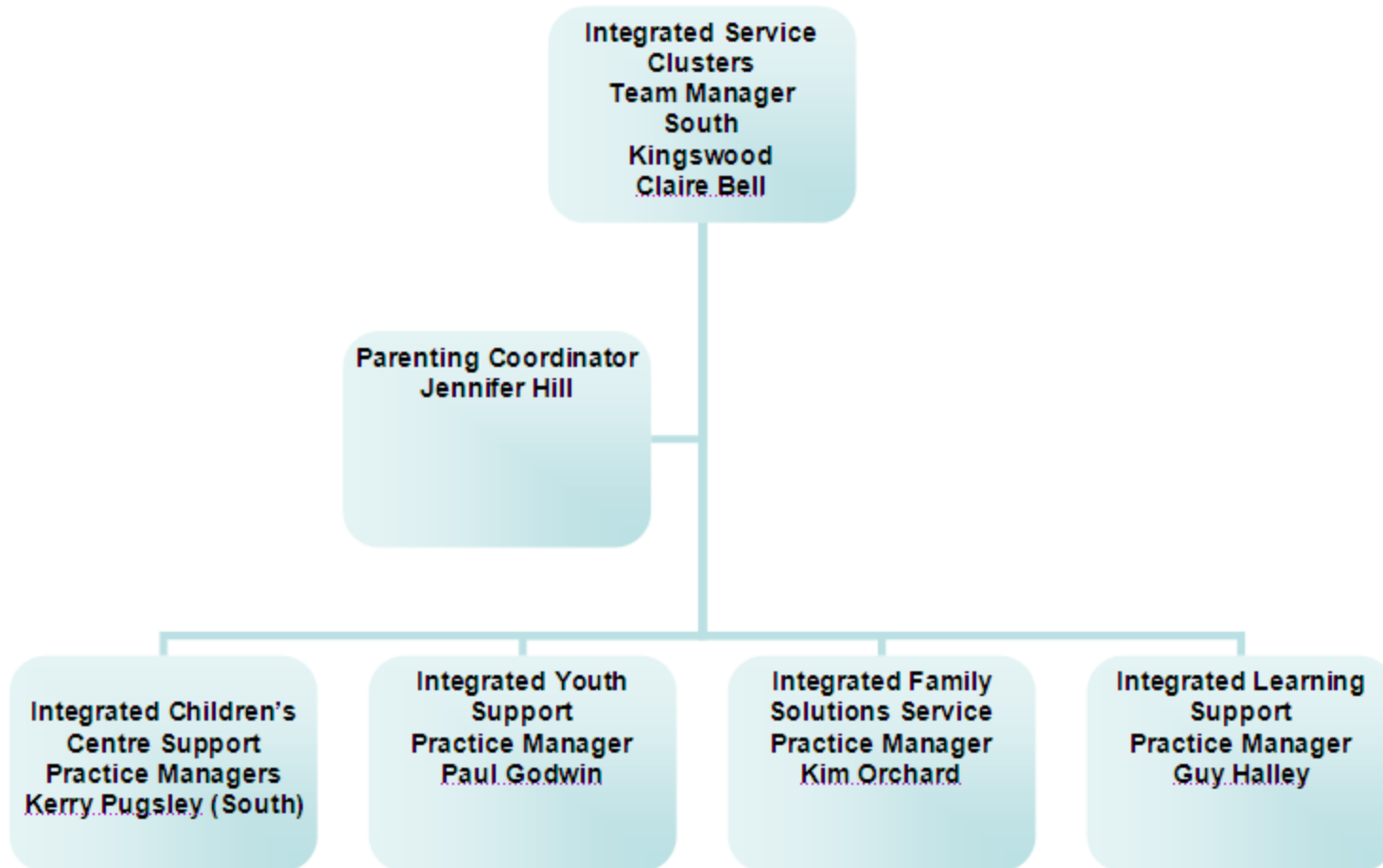




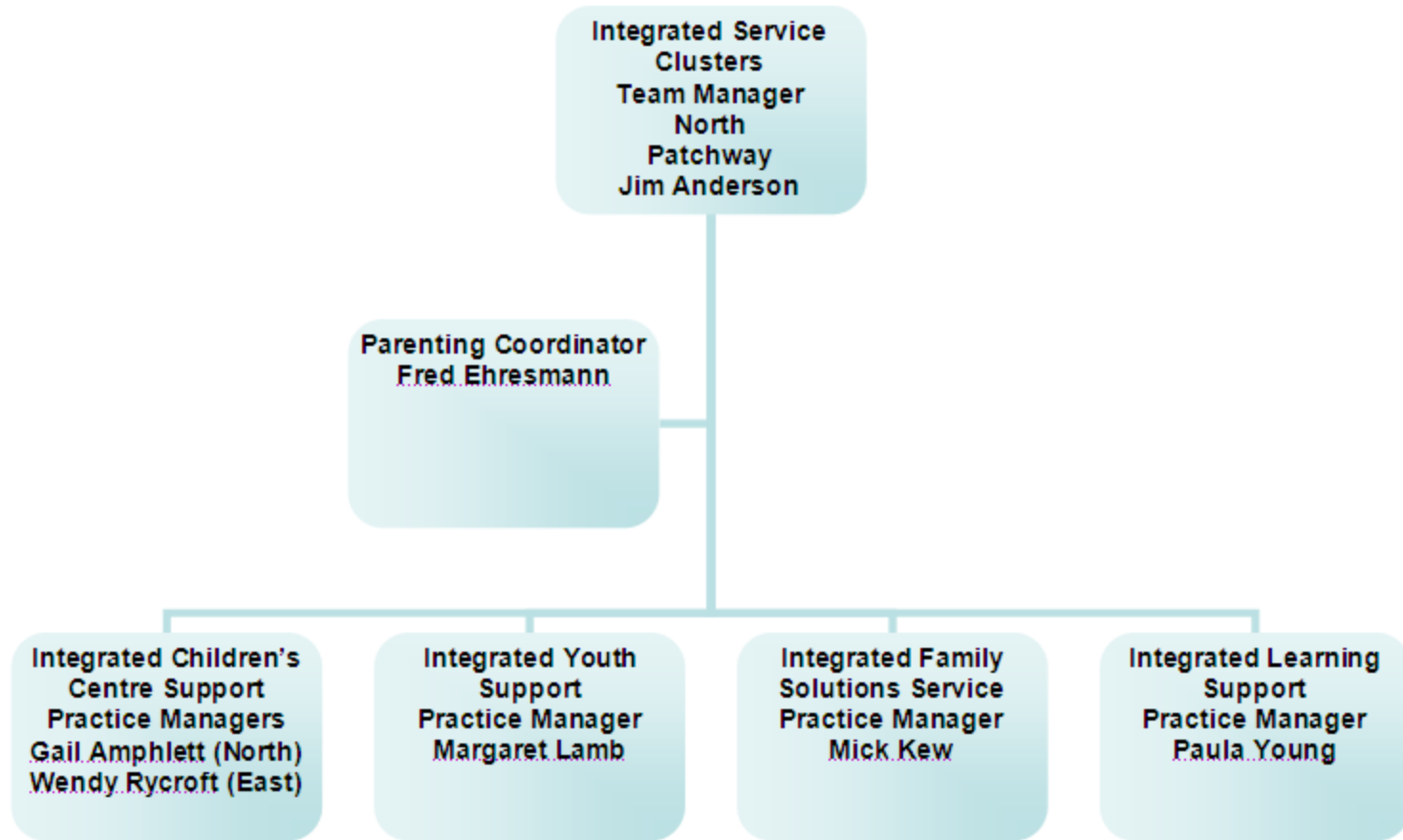
# The Preventative Service



# The South Team



# The North Team



# The ongoing Transformation Programme

4 key projects:

- Developing and single point of entry and a single business process incorporating CAF
- Integrated Youth Services
- Integrated Services years 0-12
- Reducing numbers of Looked After Children and the use of high cost placements

# Implications for the Voluntary and Community Sector:

1. Changing Partnership arrangements:
  - An end to the 3 Locality Steering Groups
  - The development of 6 Priority Neighbourhood Groups:
    - Cadbury Heath
    - Filton
    - Patchway
    - Staple Hill
    - Kingswood
    - Dodington Yate

# Implications for the Voluntary and Community Sector:

2. The Local Authority has significantly less resource

- Services are likely to be more targeted
- More opportunity for the voluntary and community sector to provide universal and targeted services