

Redesign in *AWP*

Care Forum

24th November 2010

Malcolm Sinclair

Background to Redesign

- Drivers for change relate to need for consistent quality within future resources, informed by user / carer / referrer / partner feedback, and internal reviews
- Major focus on access, minding the gap, evidenced quality of care, specialist assessment, community delivery
- Care Clusters model nationally is leading to local reviews of what services provide
- Traditional NSF model is not sufficient
- Recovery and Personalisation need greater emphasis
- Aim for consistency across the Trust for the first time

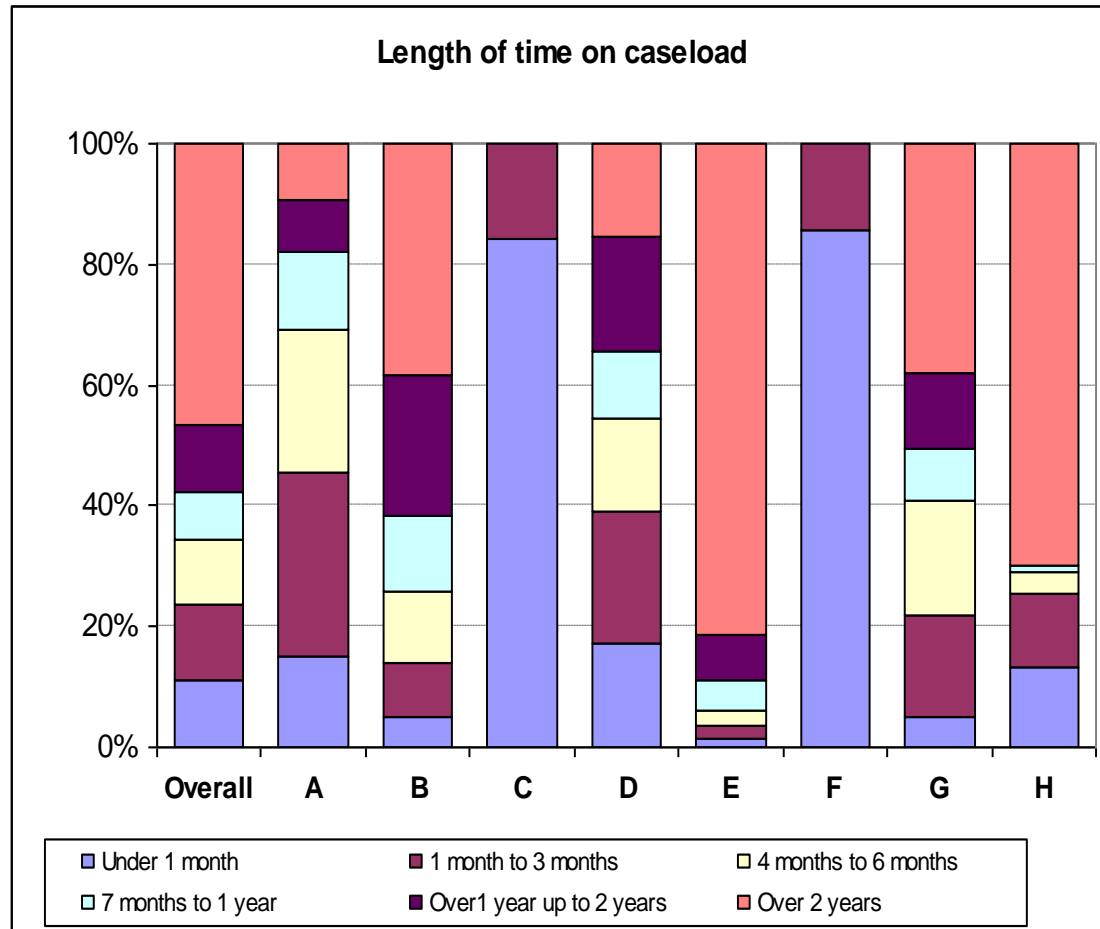
Progress so Far

- Easy Access Point defined and progressing
- Adult Model agreed and progressing
- Care Package development progressing and piloted now in South Bristol
- Care Clustering progressing well in North Somerset
- Recovery and Personalisation gaining higher profile
- Social Care / Social Work discussions commenced
- Initial Quality and Equality Impact work undertaken
- User and Carer input positive and growing
- NHS Wiltshire now progressing formal engagement
- QIPP Boards in all other PCT areas looking at Redesign-QIPP interface

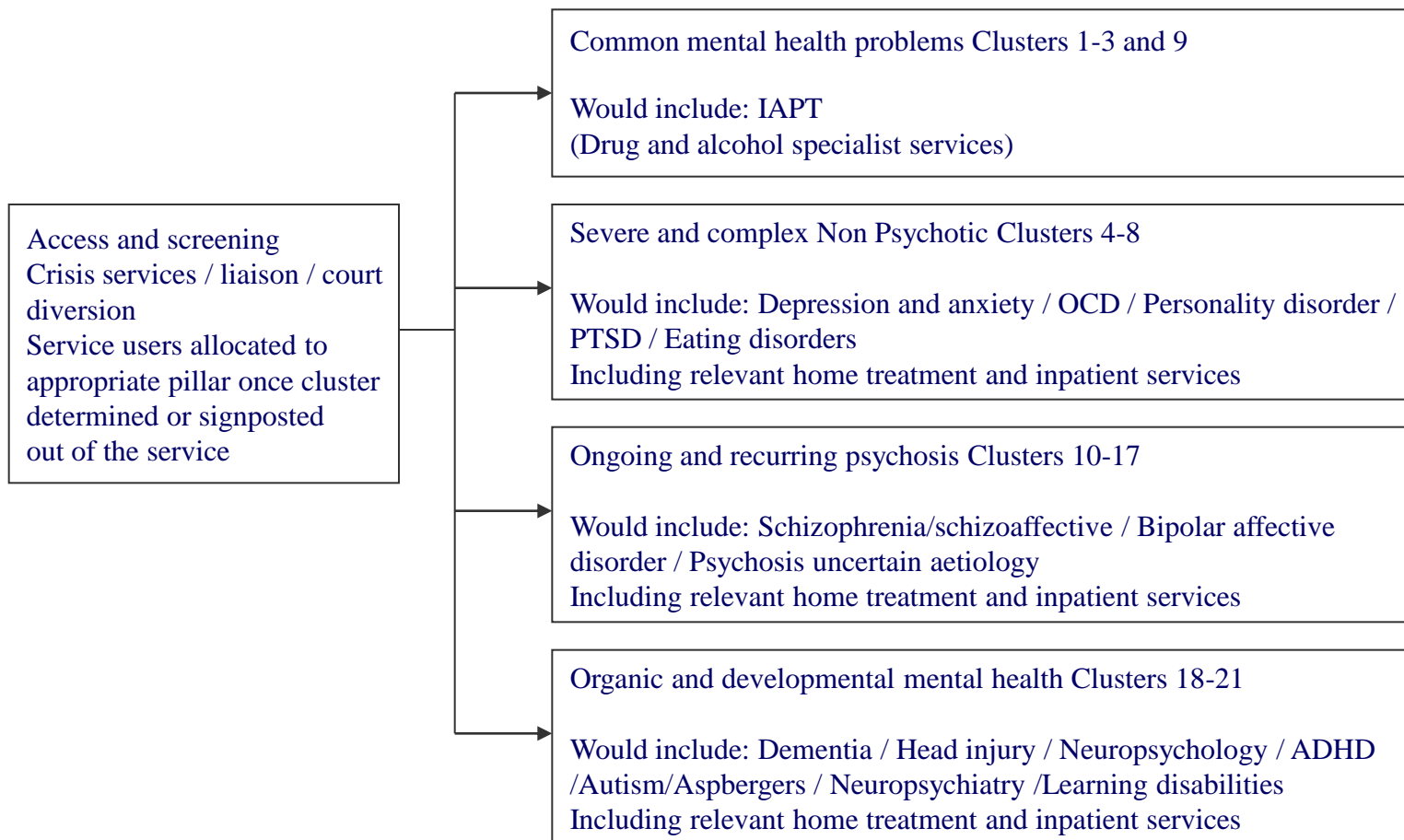
Key Aspects to discuss

- Current and future community team operation
- Length of stay and impact on beds
- Care Clusters
- Care Packages
- Adult Model – Assessment-Recovery-Intensive
- Easy Access Point
- Care Forum links

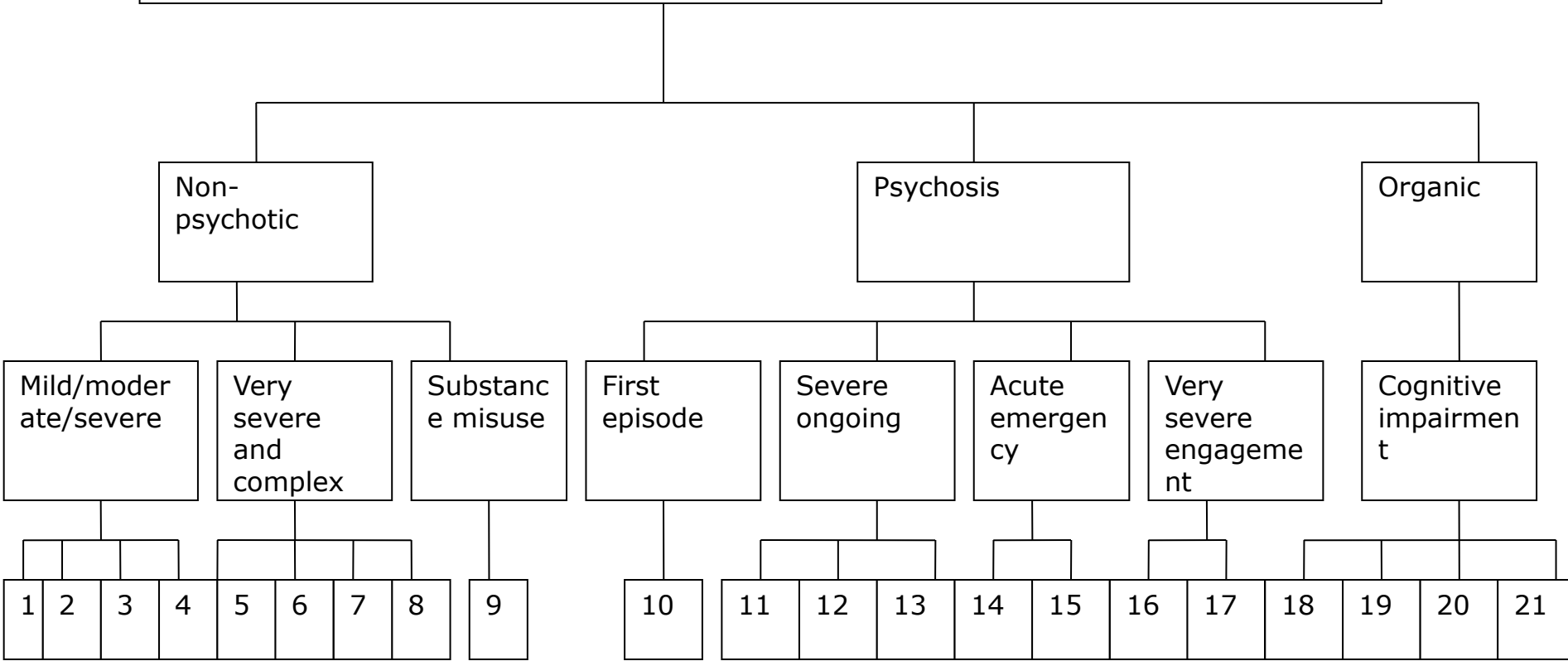
One of many examples of team variation, this relates to time on caseload, but similar exist for frequency and type of contact etc



Service design – summary of the clusters



WORKING AGE ADULTS AND OLDER PEOPLE WITH MENTAL HEALTH PROBLEMS

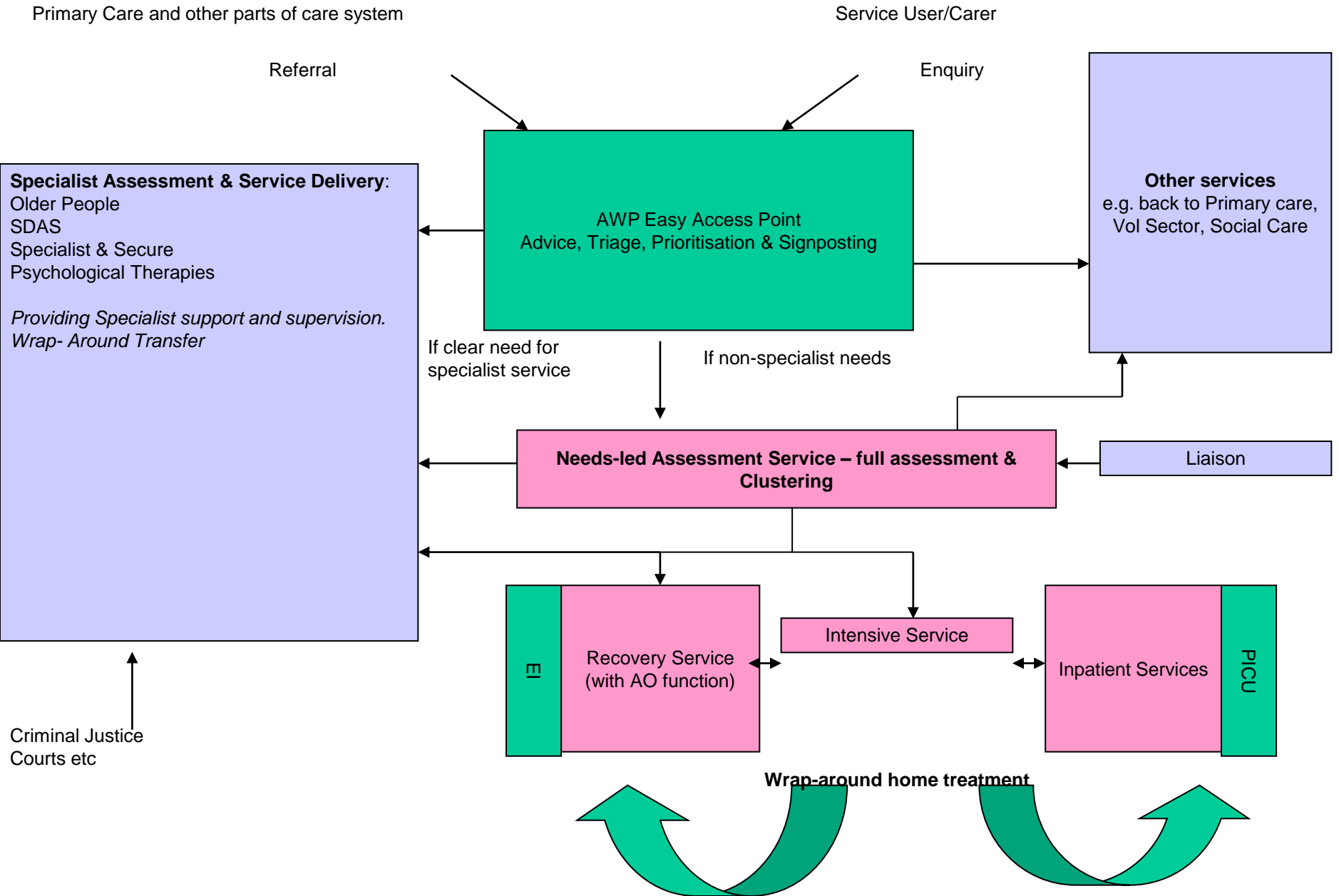


Clusters 1 – 3 – primary mental health
 Cluster 4 – Non psychotic (severe)
 Cluster 5 – Non-psychotic disorders (Very severe)
 Cluster 6 – Non-psychotic disorder of over-valued ideas
 Cluster 7 – Enduring Non-psychotic Disorders (high disability)
 Cluster 8 – Non-psychotic chaotic and challenging disorders
 Cluster 10 – First Episode Psychosis
 Cluster 11 – Ongoing recurrent psychosis (low symptoms)
 Cluster 12 – Ongoing or recurrent psychosis (high disability)
 Cluster 13 – Ongoing or recurrent psychosis (high symptom and disability)

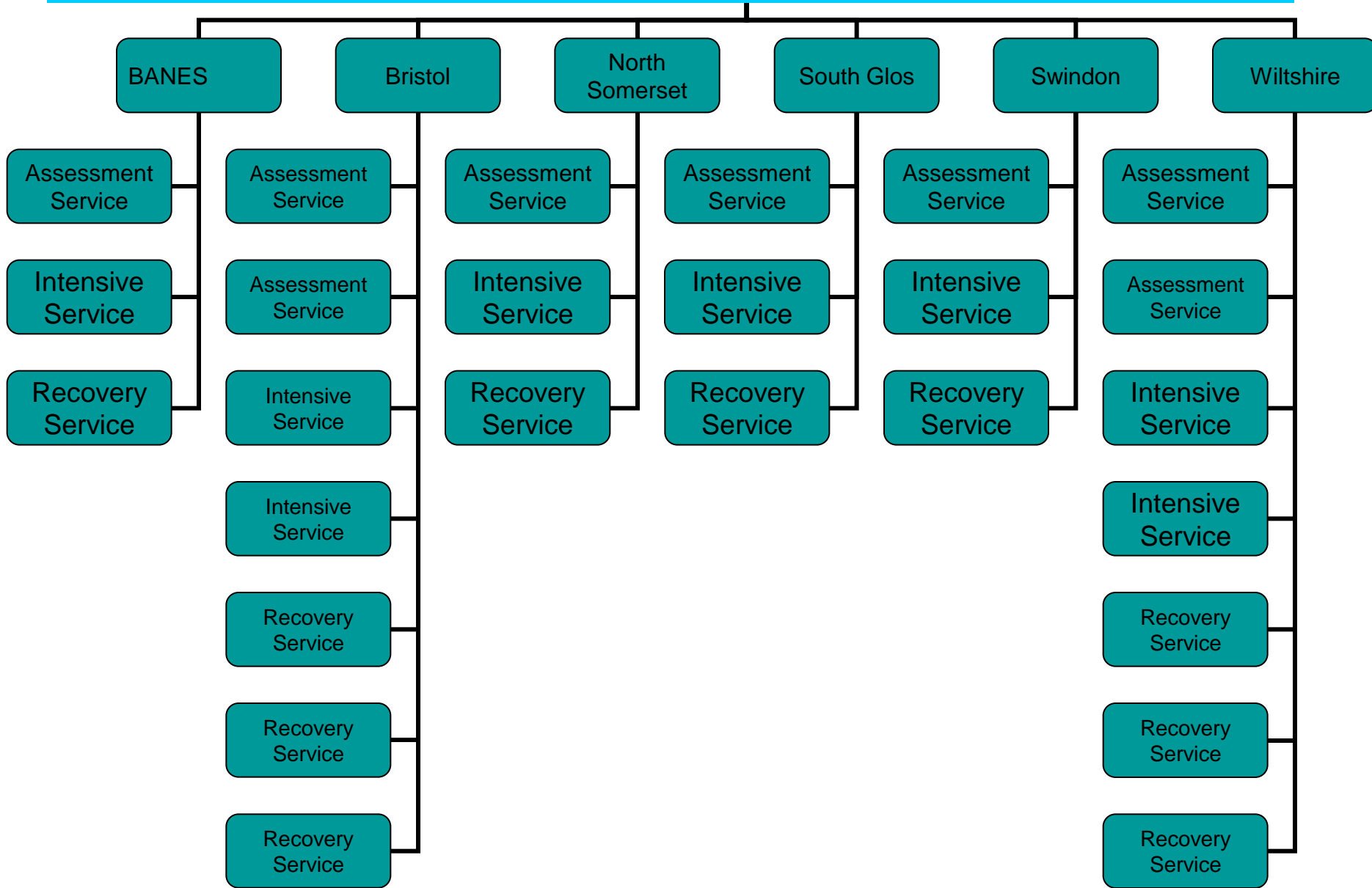
Cluster 14 – Psychotic crisis
 Cluster 15 – Severe psychotic depression
 Cluster 16 – Dual diagnosis
 Cluster 17 – Psychosis and affective disorder – difficult to engage
 Cluster 18 – Cognitive impairment (low need)
 Cluster 19 – Cognitive Impairment or Dementia Complicated (moderate need)
 Cluster 20 – Cognitive Impairment or Dementia Complicated (high need)
 Cluster 21 – Cognitive Impairment or Dementia (High physical or engagement)

Draft model of a Redesigned Service following Adults Events

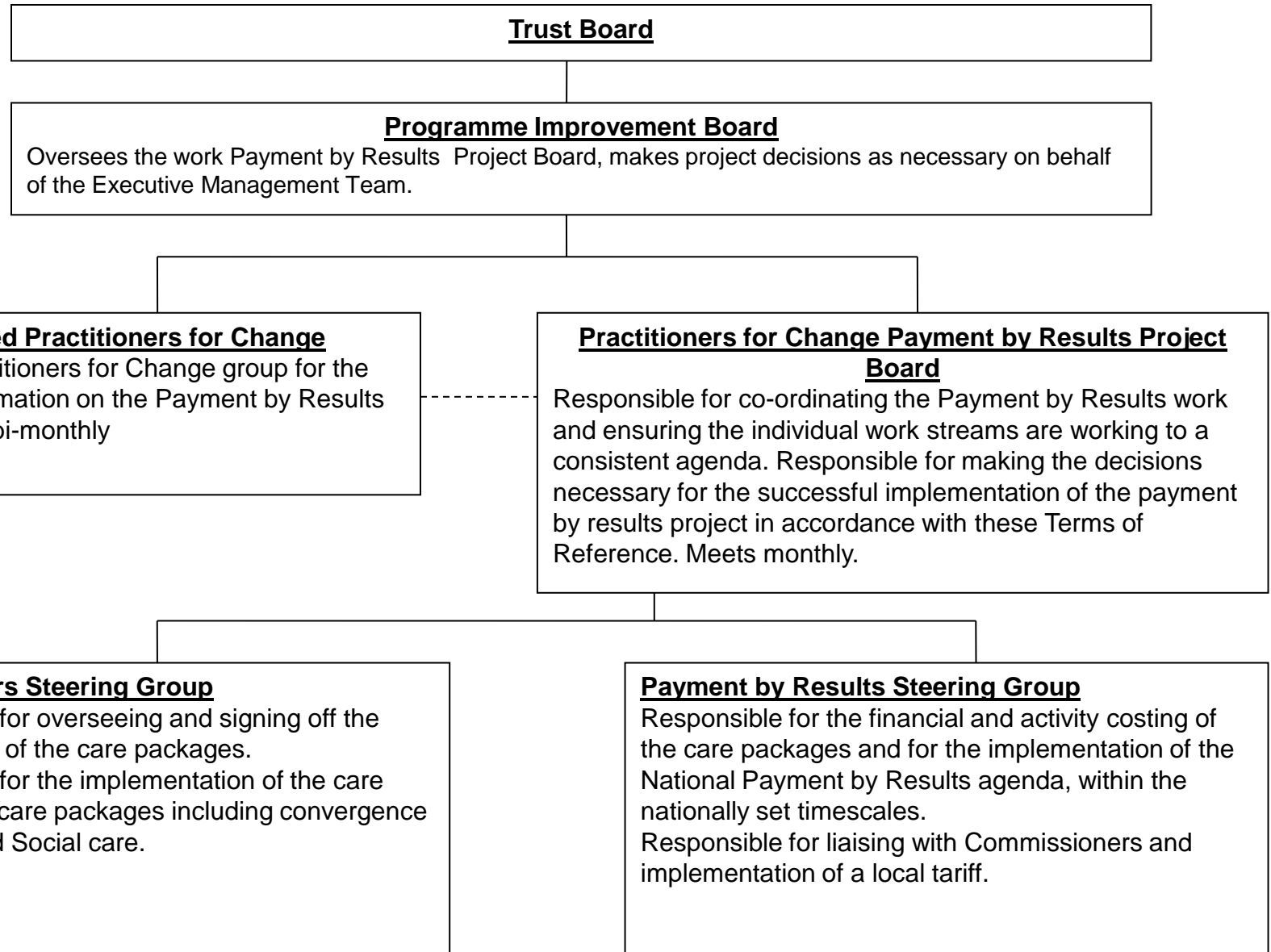
Sept 2010 v7



New Adult Community Service



Care Clusters, Packages and PBR

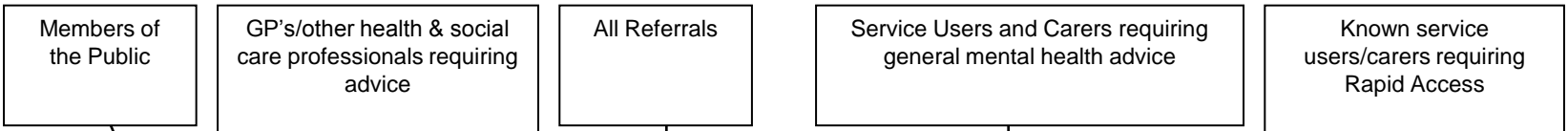


Core Care Packages that have been identified for initial pilot testing in South Bristol from October 2010:

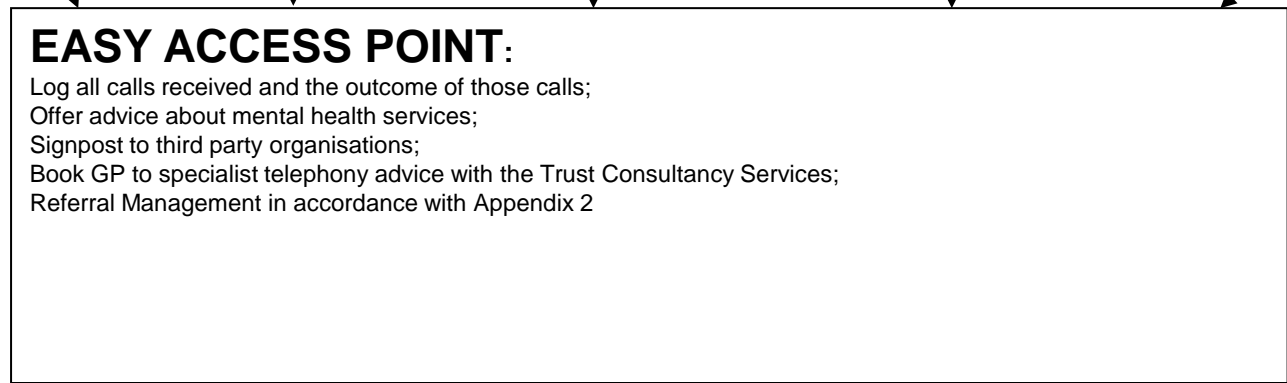
<p>General</p> <ul style="list-style-type: none">• Self-management (including recovery star and WRAP options)• Therapeutic alliance• Relapse prevention/management• Motivational interviewing• Physical health – screening / monitoring / interventions• Dual diagnosis – pre-contemplation / treatment• Vocation / meaningful occupation• Housing / finance• Psychoeducation• Carer support / assessment / care planning• Family interventions• Medication – reconciliation / support / treatment• Specialist psychological therapy	<p>Disorder specific</p> <ul style="list-style-type: none">• Generalised anxiety disorder – CCBT, CBT• Depression – CCBT, CBT, ECT• PTSD – CBT, EMDR• Eating disorders – CBT, specialist physical health monitoring• OCD/BDD – CBT• Bipolar disorder – CBT, ECT• Psychosis / schizophrenia – CBT, assertive outreach, family interventions
---	--

There will also be a set of developing packages including detailed assessment and risk management packages and dementia specific packages.

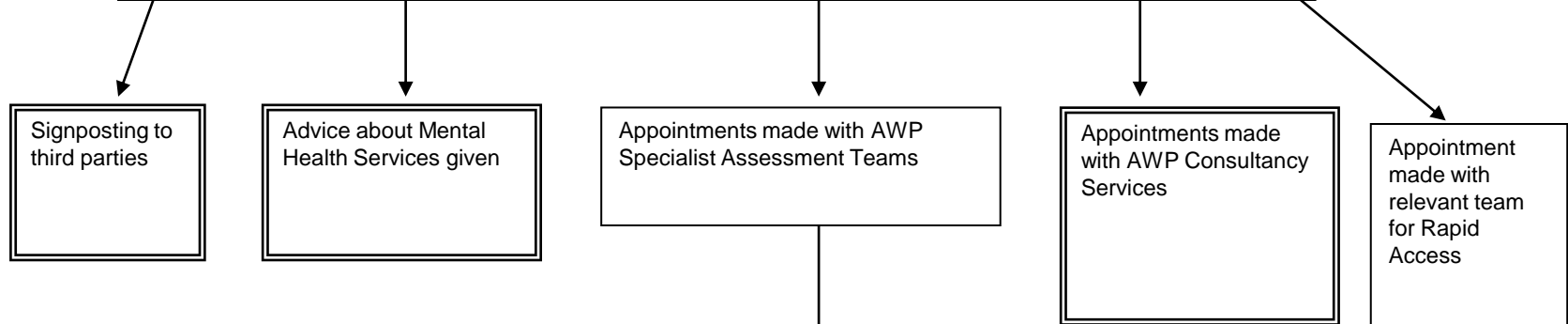
INPUTS INTO SERVICE



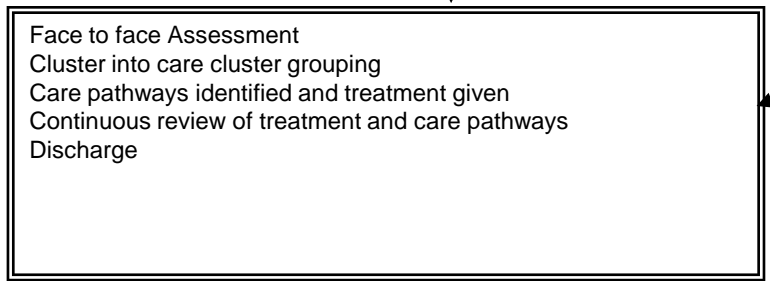
ACTIONS BY THE SERVICE



OUTPUTS FROM THE SERVICE

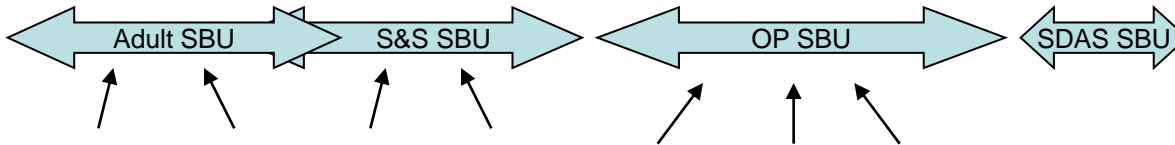
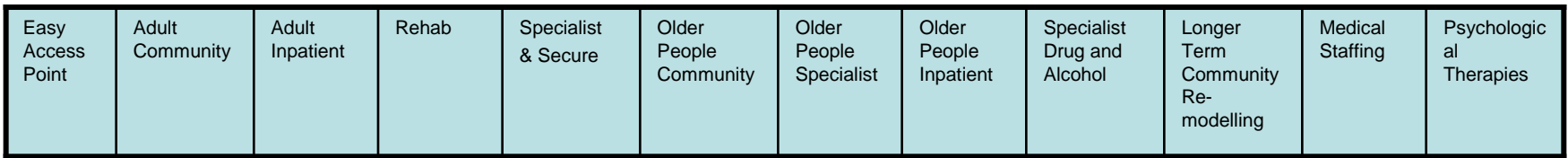


NEXT STEPS

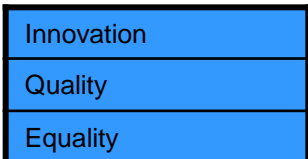
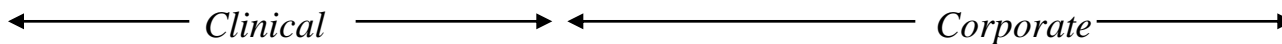
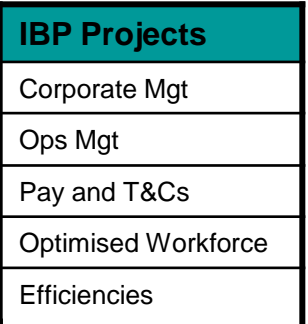
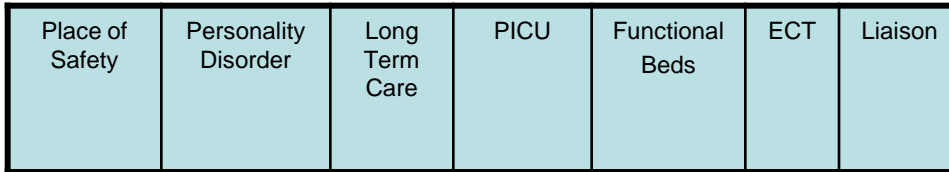


Draft Reworked Redesign Programme Framework October 2010

Redesign Projects



Change Plans



Themes

Processes

